

LACON, ILLINOIS

AL-6240 (FAA)

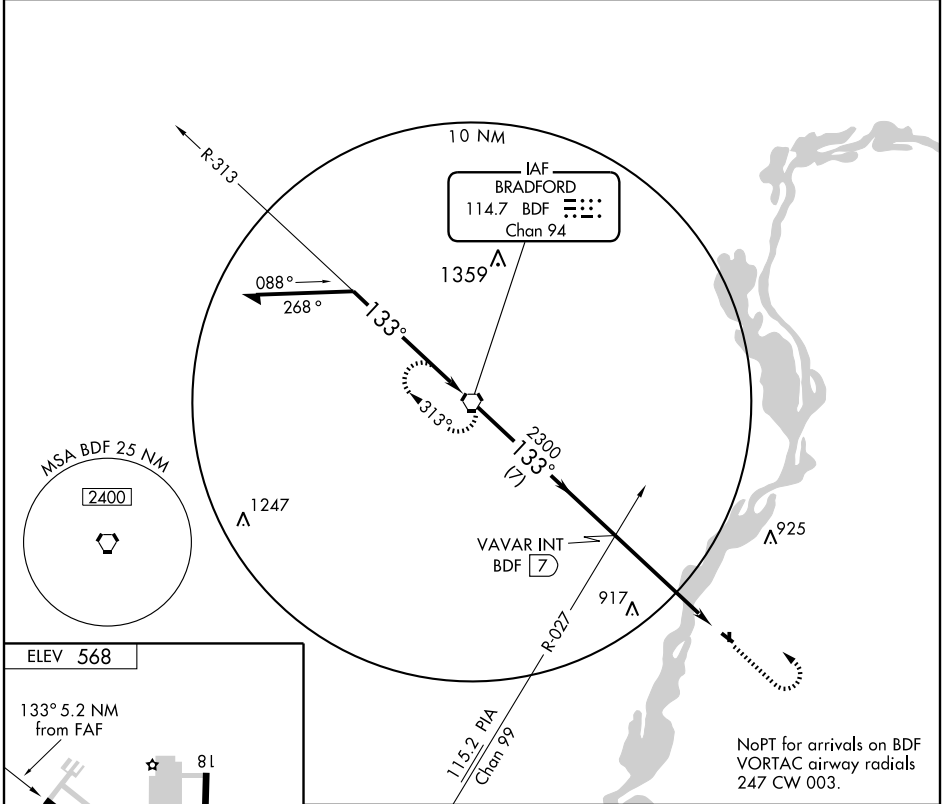
VORTAC BDF 114.7 Chan 94	APP CRS 133°	Rwy Idg TDZE 568 Apt Elev 568
--	------------------------	---

VOR RWY 13

LACON/MARSHALL COUNTY (C75)

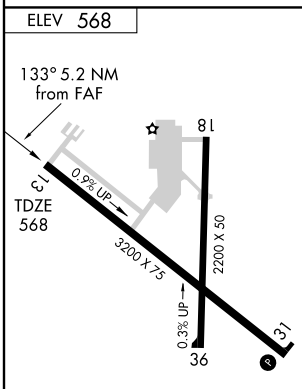
<p>▼</p> <p>▲ NA</p>	<p>MISSED APPROACH: Climb to 1500, then climbing left turn to 2500 direct BDF VORTAC and hold.</p>
----------------------	--

<p>AWOS-3 119.425</p>	<p>CHICAGO CENTER 124.55 398.9</p>	<p>UNICOM 122.8 (CTAF) 0</p>
----------------------------------	---	--



EC-3, 07 MAY 2009 to 04 JUN 2009

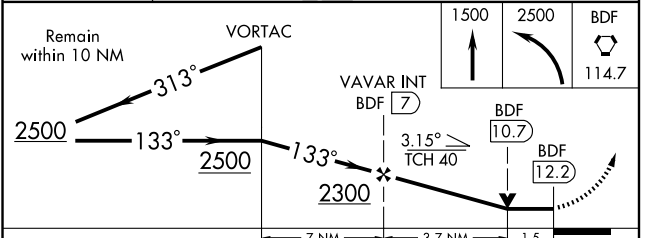
EC-3, 07 MAY 2009 to 04 JUN 2009



REIL Rwy 13 **0**
MIRL Rwy 13-31 **0**
LIRL Rwy 18-36

FAF to MAP 5.2 NM

Knots	60	90	120	150	180
Min:Sec	5:12	3:28	2:36	2:05	1:44



CATEGORY	A	B	C	D
S-13	1080-1	512 (600-1)	1080-1½ 512 (600-1½)	NA
CIRCLING	1100-1	532 (600-1)	1100-1½ 532 (600-1½)	NA

LACON, ILLINOIS
Amdt 2A 08157

41°01'N-89°23'W

LACON/MARSHALL COUNTY (C75)
VOR RWY 13