

LACON, ILLINOIS

AL-6240 (FAA)

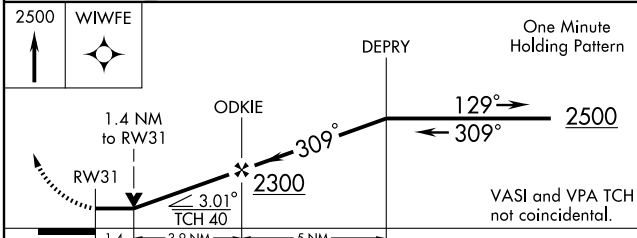
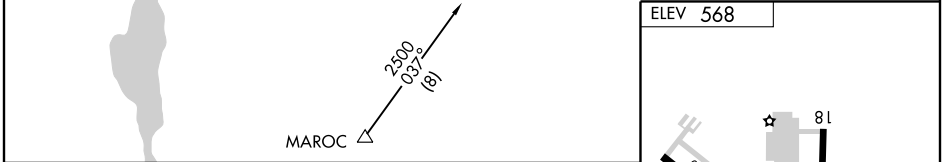
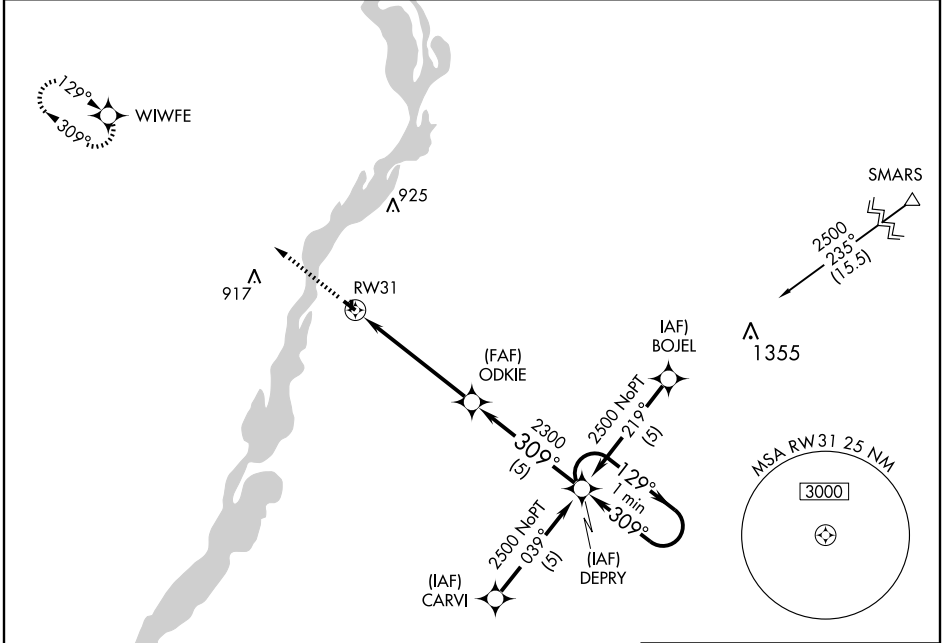
GPS RWY 31

LACON/ MARSHALL COUNTY (C75)

APP CRS	Rwy Idg	3200
309°	TDZE	568
	Apt Elev	568

<p>▼</p> <p>▲ NA</p>	<p>MISSED APPROACH: Climb to 2500 direct WIWFE WP and hold.</p>
----------------------	---

<p>AWOS-3</p> <p>119.425</p>	<p>CHICAGO CENTER</p> <p>124.55 398.9</p>	<p>UNICOM</p> <p>122.8 (CTAF) 0</p>
-------------------------------------	--	--



CATEGORY	A	B	C	D
S-31	1060-1	492 (500-1)	1060-1¼ 492 (500-1¼)	NA
CIRCLING	1100-1	532 (600-1)	1100-1½ 532 (600-1½)	NA

ELEV 568

REIL Rwy 13 0

MIRL Rwy 13-31 0

LRL Rwy 18-36

EC-3, 07 MAY 2009 to 04 JUN 2009

EC-3, 07 MAY 2009 to 04 JUN 2009

LACON, ILLINOIS
Orig 08157

41°01'N-89°23'W

LACON/ MARSHALL COUNTY (C75)

GPS RWY 31